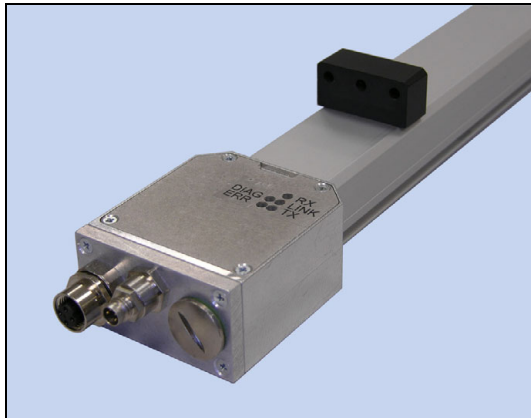
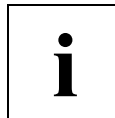
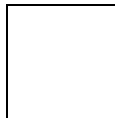
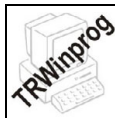
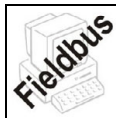


Linear-Transducer LMP-30 EIP

Eglishalde 6
 D-78647 Trossingen
 Tel. +49 - (0) 74 25 / 228 - 0
 Fax +49 - (0) 74 25 / 228 - 33
<http://www.tr-electronic.de>
 Germany



- **EtherNet/IP interface**
- **For linear measurement**
- **Non-contact and wear free measurement system**
- **Easy mounting, by means of profile housing**
- **Parameterizable**
- **Position value - Adjustment**
- **Further interfaces available**
- **Customized adaptations upon request**

7

Characteristics

Supply voltage.....	24 VDC; -20 %, +10 %
Current consumption without load	< 250 mA
Measuring principle	magnetostrictive
Measuring length, standard	50 mm...2000 mm > 2000 mm on request, in steps of 50 mm
Resolution ¹⁾	≤ 0.001 mm
Linearity deviation, related to the measuring length	± 0.1 mm up to 1.500 mm / ± 0.15 mm > 1.500 mm
Reproducibility.....	≤ 0.005 mm
Hysteresis	≤ 0.02 mm up to 1.500 mm / ≤ 0.1 mm > 1.500 mm
Temperature coefficient, related to the measuring length.....	< 8 µm/°C ≤ 500 mm / < 15 ppm/°C > 500 mm
Straight line velocity and mounting position.....	no restrictions
Material - measuring body.....	Aluminium extruded profile
Magnet.....	Type T1-S3818, other on request
EtherNet/IP.....	IEC 61784-1:2003 CP 2/2 Type 2, IEC 61158:2003 Type 2
- Physical Layer	EtherNet/IP 100Base-TX, Fast Ethernet, ISO/IEC 8802-3
- Output code	Binary
- Device profile.....	Encoder Device Profile 0x22, ODVA specification
- Transmission rate	100 MBit/s
- Transmission	CAT-5e cable, shielded (STP), ISO/IEC 11801
- Parameter ¹⁾	Resolution, Counting direction, Preset value, Averaging of Position
Cycle times, internal	
≤ 0.5 m.....	0.5 ms
≤ 1.0 m.....	1.0 ms
≤ 2.0 m.....	1.5 ms
Option	
- Number of possible magnets.....	3, minimum distance between two magnets 80 mm
Programming, alternative.....	WINDOWS® compatible, TRWinProg

¹⁾ programmable parameter

