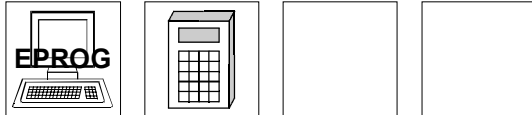


**Linear-Encoder LA-66-K P**

- **High Pressure Type, Makes it Possible for Installation into Hydraulic Cylinders**
- **For Linear Measurement**
- **Non Contact and Wear Free**
- **Programmable and Scaleable**
- **Parallel Interface**

**7****Electrical Data**

Measurement Principle .....	Magnetostrictive
Measuring Length (Stroke) Standard (mm) .....	150, 300, 500, 700, 750, 1000, 1500, 2000, 2500, 3000, > 3000 by request
Sensor Capacity .....	max. 20 Bit
* Resolution .....	max. 0.01 mm
Operating Voltage.....	19-27 V DC
Power Dissipation (No Load) .....	< 5 Watt
Programmable via RS485.....	IBM PC Compatible EPROG Software, PT-100N Programming Terminal
Output Code (programmable) .....	Binary, BCD, Gray
Output Options .....	Push-Pull, Open Collector, Open Emitter (max. 35 V)
Maximum Current.....	100 mA / Short Circuit Protected
Input Options	
* Forward / Reverse.....	Change direction of count
* Preset .....	Adjust absolute position to a given value
* Latch.....	Freezes data lines
* Bus .....	For multiplexing many encoders. Only to be used with Open Collector or Open Emitter Output drivers
Logic Levels .....	"0" < + 2 VDC, "1" > + 8 V DC, max. 30 VDC
Cycle Time.....	See Dimensional Drawings
Pin Configuration .....	Upon Request

\* Programmable Parameters

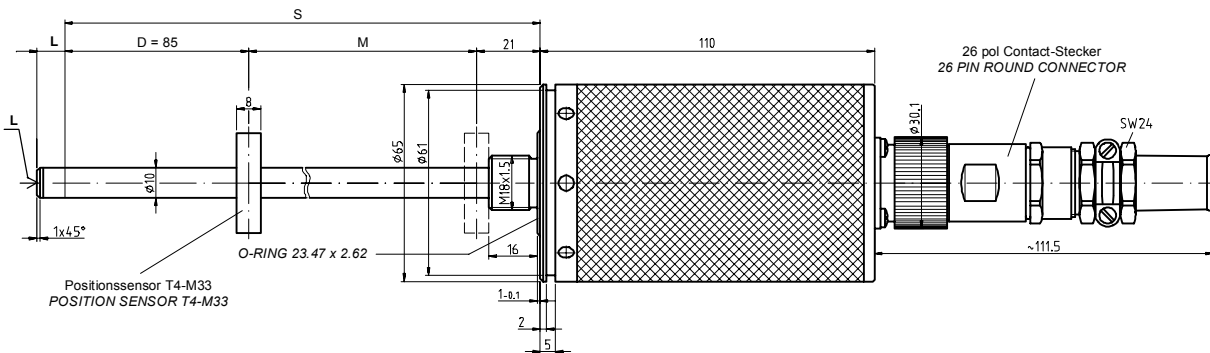
**Environmental Data**

Electromagnetic compatibility (EMC) .....	EN 61000-4-2 (IEC-801-2) / EN 61000-4-4 (IEC-801-4)
Operating Temperature.....	0°-70°C (32° to 158° F) (Optional -20° to +70°C) (-4° to 158° F)
Storage Temperature.....	-30° to +80°C (-22° to 178° F)
Relative Humidity .....	98 % (non condensing)
*Protection Class .....	IP 65 (DIN 40 050)
* The protection class of the sensor can be effected by the type of connector used.	

### Mechanical Data

Linearity .....	< 0.05 % of Measuring Length
Repeatability .....	≤ 0.01 mm
Hysteresis .....	< 0.1 mm
Temperature Coefficient .....	< 5 µm / °C
Vibration (Sinus 50-2000 Hz)	
per DIN IEC 68-2-6 .....	≤ 100 m/s <sup>2</sup> (10g)
Shock (11ms) per DIN IEC 68-2-27 .....	≤ 1000 m/s <sup>2</sup> (100g)
Pressure Resistance (Option) .....	600 bar
Rod Material .....	Cr/Ni-Mixture
Magnetic Field .....	< 3 mT (mili Tesla)
Operating Speed and Mounting Orientation .....	No restrictions
Magnet Type (Standard) .....	T4-M33
Magnet Type( Option) .....	T3-U64
Rod Mounting .....	Option
Mechanical Special Types .....	Upon Request
Connector .....	26 pin Contact Connector

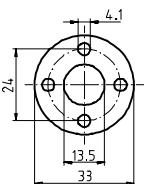
### Dimensional Drawing



S = Stablänge  
 D = Dämpfungszone: Keine Herstellergarantie für die Meßdaten  
 M = Meßlänge: Typenbezogener Meßweg  
 L = 5 mm Zusatzlänge mit M4x5 bei Option Stabspitzenlagerung

S = TOTAL LENGTH  
 D = DAMPENING ZONE: IN THIS AREA NO MEASURING SIGNAL IS PRODUCED  
 M = EFFECTIVE LENGTH  
 L = 5 MM ADDITIONAL LENGTH WITH M4x5 FOR OPTION ROD MOUNTING

Positionssensor T4-M33  
 POSITION SENSOR T4-M33



Meßlänge M (mm) EFFECTIVE LENGTH M (mm)	Stablänge S (mm) TOTAL LENGTH S (MM)	Zykluszeit (ms) CYCLE (ms)
150	256	1,4
300	406	1,4
500	606	1,4
700	806	1,4
750	856	1,4
1000	1106	1,8
1500	1606	2,7
2000	2106	3,6
2500	2606	4,5
3000	3106	5,4