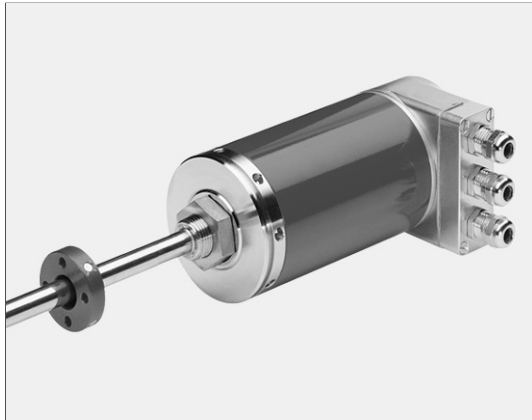


Linear-Encoder LA-66-K IBS



- **High Pressure Type, Makes it Possible for Installation into Hydraulic Cylinders**
- **For Linear Measurement**
- **Non Contact and Wear Free**
- **Programmable via INTERBUS-S**
- **IBS INTERBUS-S Interface**

Electrical Data

Measurement Principle	Magnetostrictive
Measuring Length (Stroke) Standard (mm)	150, 300, 500, 700, 750, 1000, 1500, 2000, 2500, 3000
	> 3000 by request
Sensor Capacity	max. 20 Bit
* Resolution	max. 0.01 mm
Operating Voltage.....	19-27 V DC
Power Dissipation (No Load)	< 4 Watt
Programmable via INTERBUS-S.....	2 Wire Long Distance Field Bus, RS422, Electrically Isolated
Output Code	Binary
Baud Rate.....	300 kbaud min., 500 kbaud max., Including Control and Status Bytes
Identification Number.....	51 decimal
Programmable Parameters via IBS bus	
Count Direction	
Number of Counts per Length	
Preset Value	
Adjustf Absolute Value	
Inputs	
Forward / Reverse	Change count direction
Preset.....	Adjust absolute position to a given value (i.e. zero set)
Logic Levels	"0" < + 2 V DC, "1" > + 8 V DC, max. 30 V DC
Cycle Time.....	See Dimensional Drawing
Pin Configuration	Upon Request

Environmental Data

Electromagnetic compatibility (EMC)	EN 61000-4-2 (IEC-801-2) / EN 61000-4-4 (IEC-801-4)
Operating Temperature.....	0°-70°C (32° to 158° F) (Optional -20° to +70°C) (-4° to 158° F)
Storage Temperature.....	-30° to +80°C (-22° to 178° F)
Relative Humidity	98 % (non condensing)
*Protection Class	IP 65 (DIN 40 050)
* The protection class of the sensor can be effected by the type of cable used.	

Mechanical Data

Linearity	< 0.05 % of Measuring Length
Repeatability	≤ 0.01 mm
Hysteresis	< 0.1 mm
Temperature Coefficient	< 5 µm / °C
Vibration (Sinus 50-2000 Hz)	
per DIN IEC 68-2-6	≤ 100 m/s ² (10g)
Shock (11ms) per DIN IEC 68-2-27	≤ 1000 m/s ² (100g)
Pressure Resistance (Option)	600 bar
Rod Material	Cr/Ni-Mixture
Magnetic Field	< 3 mT (mili Tesla)
Operating Speed and Mounting Orientation	No restrictions
Magnet Type (Standard)	T4-M33
Magnet Type(Option)	T3-U64
Rod Mounting	Option
Mechanical Special Types	Upon Request
Connector	3 x PG 7 radial mount

Dimensional Drawing

Sichtfenster für 4 LED
 WINDOW FOR 4 LED

Schirmleiter
 SHIELDING

Positionssensor T4-M33
 POSITION SENSOR T4-M33

O-RING 23.47 x 2.62

PG7

SW14

S = Stablänge
 D = Dämpfungszone: Keine Herstellergarantie für die Meßdaten
 M = Meßlänge: Typenbezogener Meßweg
 L = 5 mm Zusatzlänge mit M4x5 bei Option Stabspitzenlagerung

S = TOTAL LENGTH
 D = DAMPENING ZONE: IN THIS AREA NO MEASURING SIGNAL IS PRODUCED
 M = EFFECTIVE LENGTH
 L = 5 MM ADDITIONAL LENGTH WITH M4x5 FOR OPTION ROD MOUNTING

Positionssensor T4-M33
 POSITION SENSOR T4-M33

Für Schirmleiter:
 Schraube M4x8 und Kabelschuh,
 mit Zahnscheibe nach DIN 6797-A
 4.3-FSt unterleqt.

FOR SHIELDING:
 USE METRIC SCREW M4X8 WITH FORKED TERMINAL
 FOR GOOD CONTACT TO HOUSING USE A STUDDER
 DISK DIN 6797-A 4.3-FST.

Meßlänge M (mm) EFFECTIVE LENGTH M (mm)	Stablänge S (mm) TOTAL LENGTH S (MM)	Zykluszeit (ms) CYCLE (ms)
150	256	1.4
300	406	1.4
500	606	1.4
700	806	1.4
750	856	1.4
1000	1106	1.8
1500	1606	2.7
2000	2106	3.6
2500	2606	4.5
3000	3106	5.4