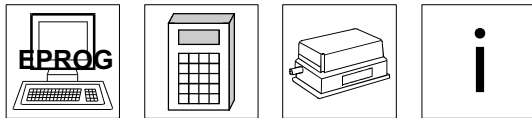


**Absolute-Encoder CE-65-M ISI**

For an interactive Power Point presentation of the ISI principle please click [here](#)



- **Small and Compact**
- **Multi-Turn**
- **ISI (Incremental Serial Interface)**
- **Absolute Incremental Encoder**
- **Programmable Encoder Parameters**
- **Standard Interchangeable Mounting Flanges**

**Electrical Data**

Encoder Capacity .....	max. 25 Bit
* Steps / Revolution .....	8192 Steps / Rev
* Number of Revolutions .....	4096 Revolution
Supply Voltage .....	11-27 VDC
Power Dissipation (No Load) .....	< 4 Watt
Programming via RS485 .....	IBM Compatible EPROG Software, PT100 Programming Terminal
<b>Inputs</b>	
* Load Input .....	Request for Encoder Position
* Preset 1 .....	Adjust absolute position to a given set value (i.e. zero set)
* Preset 2 .....	Adjust absolute position to a given set value (i.e. zero set)
Logic Levels .....	"0" < +2 VDC, "1" > + 8 VDC, max. 30 VDC
<b>Output Options</b> .....	
	Push-Pull (100 mA), RS422
* Load Output .....	Verification of Load Request
Channel 1 .....	A
Channel 1 neg. ....	A neg.
Channel 2 .....	B
Channel 2 neg. ....	B neg.
* Load Frequency .....	Programmable (2 kHz to 115 kHz)
Pin Configuration .....	Upon Request
* Programmable Parameters	

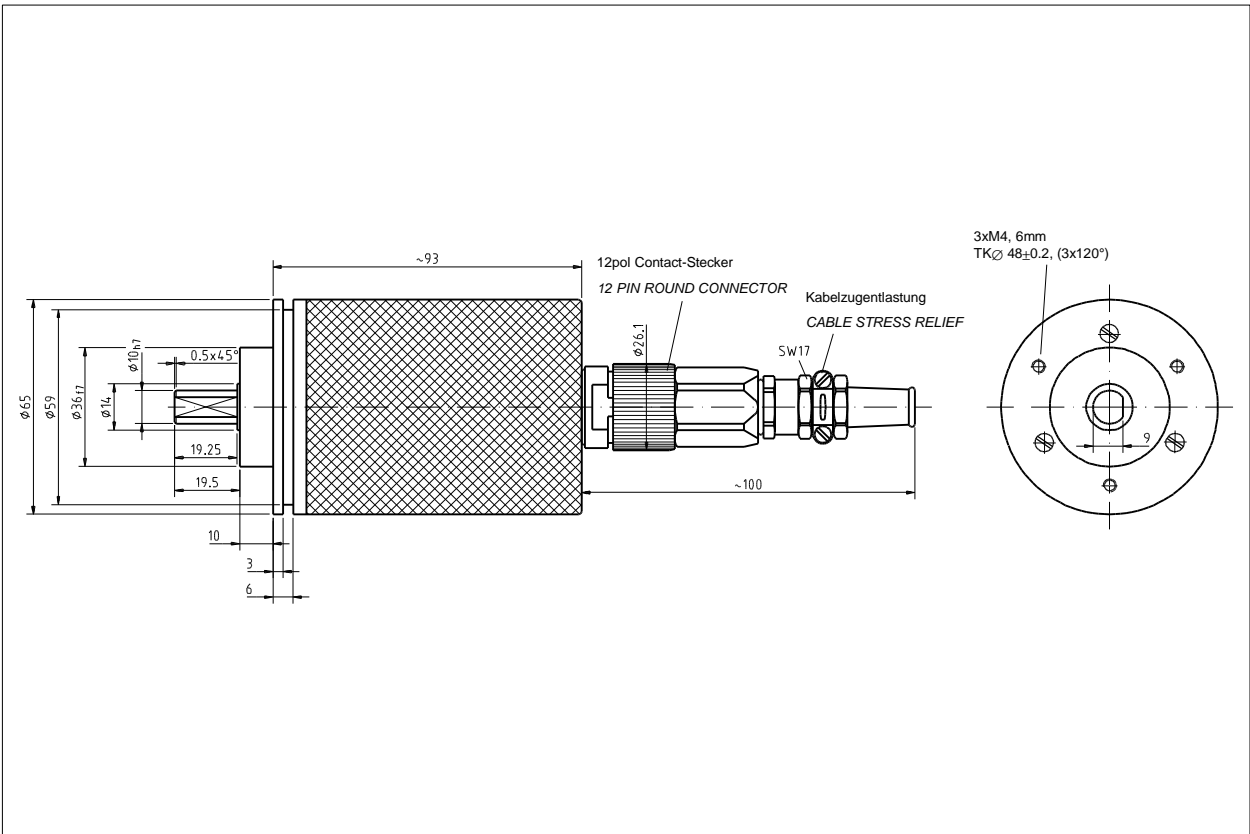
**Environmental Data**

Electromagnetic compatibility (EMC) .....	EN 61000-4-2 (IEC-801-2) / EN 61000-4-4 (IEC-801-4)
Operating Temperature .....	0°-60°C (32° to 140° F) / (Optional -20° to +70°C) (-4° to 158° F)
Extended Temperature (Optional) .....	-30° to +80°C (-22° to 176°F)
Relative Humidity .....	98 % (non condensing)
* Protection Class .....	IP 65 (DIN 40 050)
* The protection class of the encoder can be effected by the type of connector used.	

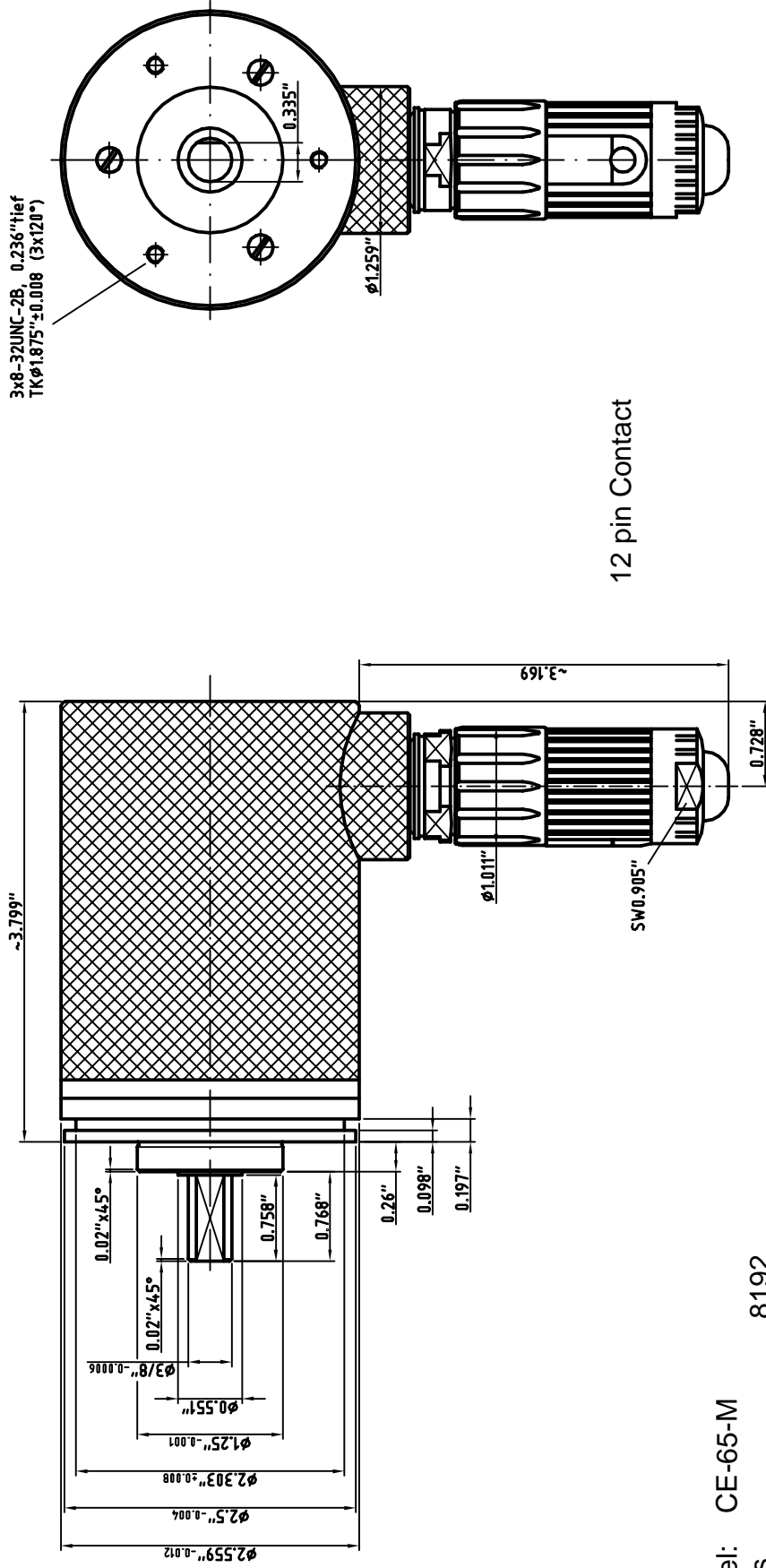
**Mechanical Data**

Maximum Rotational Speed .....	6000 RPM
Maximum Load on Shaft .....	40 N Axial, 60 N Radial (at end of shaft)
Lifetime on Bearings .....	3.9 x 10 <sup>10</sup> Revolutions at:
-Operational Speed .....	3000 RPM
-Load on Shaft.....	20 N Axial, 30 N Radial (at end of shaft)
-Operating Temperature .....	60°C ( 140°F)
Weight .....	0.7 kg (1.5 lb.)
Maximum Angular Acceleration .....	≤ 10 <sup>4</sup> rad/s <sup>2</sup>
Momentum of Inertia.....	2.5 x 10 <sup>-6</sup> kg m <sup>2</sup>
Startup Momentum at 20°C (68°F).....	2 Ncm
Vibration ( 50-2000 Hz Sinusoidal )	
DIN IEC 68-2-6 .....	≤ 100 m/s <sup>2</sup> (10g)
Shock (11ms) DIN IEC 68-2-27 .....	≤ 1000 m/s <sup>2</sup> (100g)
Standard Connector.....	12 pin Contact Connector - Axial

**Dimensional Drawing** (For the North American version of this encoder please go to the next two pages)



(For the North American version of this encoder please go to the next two pages)



12 pin Contact

Model: CE-65-M

Steps 8192

Revs. 4096

Interface ISI

Output Level RS422

Code -----

Supply Voltage 11-27 VDC

Protection Class IP65

Default Temperature 0 - 60C

Mounting Flange ZB 1.25"

Shaft 3/8" (0.768" long) with flat

Connector 12 Pole Contact, radial with plug

Options Programmable, Pre set 1+2

**TR** TR Electronic GmbH  
Eglishalde 6  
78647 Trossingen  
Telefon 07425/228-0

Maßstab 1:1 DIN A3 Projekt-Nr.:

Article No: 110-01595

Datum		Name	
Erstellt	15.05.97	Koslowski	
Bearb.			
Gepr.			
Norm			
Pin Out		1439A	

1	Überarbeitung	9.12.98	Water
Zust. Änderung			

DWG#	04-418-1684
Blatt	1
	Bl

**CE-65-M**

