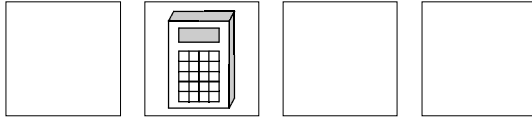


Linear-Encoder LA-66-K CAM

- **High Pressure Type, Makes it Possible for Installation into Hydraulic Cylinders**
- **For Linear Measurement**
- **Non Contact and Wear Free**
- **Programmable and Scaleable**
- **Number of Cams - 8**

7**Electrical Data**

Measurement Principle	Magnetostrictive
Measuring Length (Stroke) Standard (mm)	150, 300, 500, 700, 750, 1000, 1500, 2000, 2500, 3000 > 3000 by request
Number of Cams	8 Outputs, 1 Cam per output Additional outputs and Cams available upon request
* Resolution	max. 0.01 mm
Operating Voltage	19-27 V DC
Power Dissipation (No Load)	< 5 Watt
Programmable via RS485	PT-100N Programming Terminal
* Output Code	Programmable Cams
Output Options	Push-Pull, Open Collector, Open Emitter (max. 35 V)
Number of Outputs	8 plus Inverted Signals
Maximum Current	100 mA / Short Circuit Protected
Inputs	
* Forward / Reverse	Change count direction
* Preset	Adjust absolute position to a given value (i.e. zero set)
Logic Levels	"0" < + 2 V DC, "1" > + 8 V DC, max. 30 V DC
Cycle Time	See Dimensional Drawing
Pin Configuration	Upon Request

* Programmable Parameters

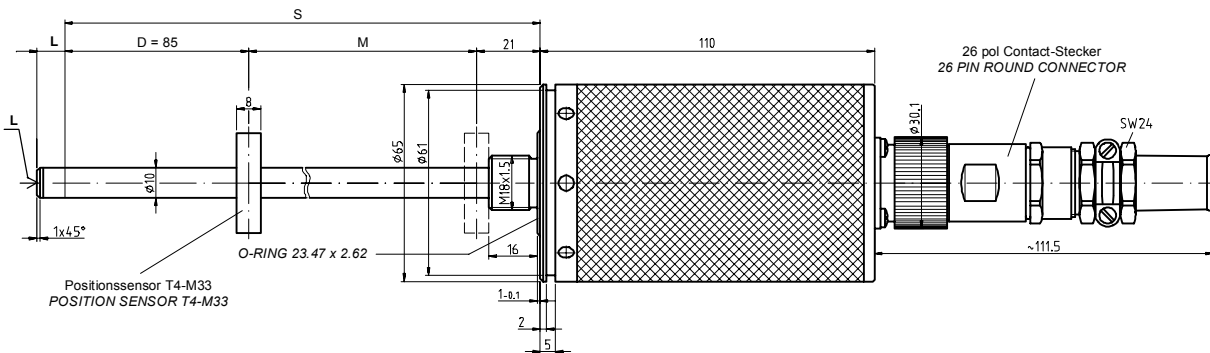
Environmental Data

Electromagnetic compatibility (EMC)	EN 61000-4-2 (IEC-801-2) / EN 61000-4-4 (IEC-801-4)
Operating Temperature	0°-70°C (32° to 158° F) (Optional -20° to +70°C) (-4° to 158° F)
Storage Temperature	-30° to +80°C (-22° to 178° F)
Relative Humidity	98 % (non condensing)
*Protection Class	IP 65 (DIN 40 050)
* The protection class of the sensor can be effected by the type of connector used.	

Mechanical Data

Linearity	< 0.05 % of Measuring Length
Repeatability	≤ 0.01 mm
Hysteresis	< 0.1 mm
Temperature Coefficient	< 5 µm / °C
Vibration (Sinus 50-2000 Hz)	
per DIN IEC 68-2-6	≤ 100 m/s ² (10g)
Shock (11ms) per DIN IEC 68-2-27	≤ 1000 m/s ² (100g)
Pressure Resistance (Option)	600 bar
Rod Material	Cr/Ni-Mixture
Magnetic Field	< 3 mT (mili Tesla)
Operating Speed and Mounting Orientation	No restrictions
Magnet Type (Standard)	T4-M33
Magnet Type(Option)	T3-U64
Rod Mounting	Option
Mechanical Special Types	Upon Request
Connector	26 pin Contact Connector

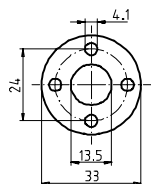
Dimensional Drawing



S = Stablänge
 D = Dämpfungszone: Keine Herstellergarantie für die Meßdaten
 M = Meßlänge: Typenbezogener Meßweg
 L = 5 mm Zusatzlänge mit M4x5 bei Option Stabspitzenlagerung

S = TOTAL LENGTH
 D = DAMPENING ZONE: IN THIS AREA NO MEASURING SIGNAL IS PRODUCED
 M = EFFECTIVE LENGTH
 L = 5 MM ADDITIONAL LENGTH WITH M4x5 FOR OPTION ROD MOUNTING

Positionssensor T4-M33
 POSITION SENSOR T4-M33



Meßlänge M (mm) EFFECTIVE LENGTH M (mm)	Stablänge S (mm) TOTAL LENGTH S (MM)	Zykluszeit (ms) CYCLE (ms)
150	256	1,4
300	406	1,4
500	606	1,4
700	806	1,4
750	856	1,4
1000	1106	1,8
1500	1606	2,7
2000	2106	3,6
2500	2606	4,5
3000	3106	5,4